

# PresenceLight 180

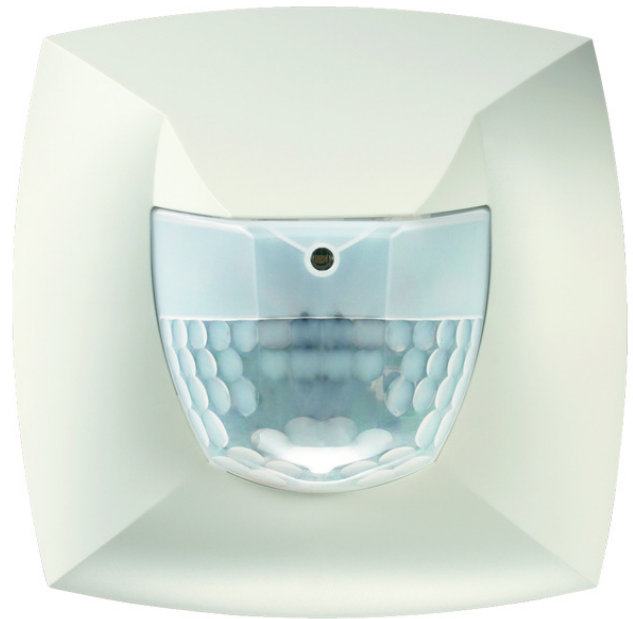
Item no.: 2000050

**theben**

Präsenzmelder & Bewegungsmelder  
Wandmontage innen

## Description

- Passive infra-red presence detector for wall installation
- Half-round detection area 180°, Ø 16 m, (100 m<sup>2</sup>)
- Mixed light measurement
- Light switch output (relay, 230 V)
- Automatic lighting control
- Lighting control with light threshold value and self-learning switch-off delay
- Pulse function for staircase time switch
- Can be configured remotely



## Technical data

PresenceLight 180	
Operating voltage	230 V AC
Frequency	50 Hz
Installation height	1.6 – 2.2 m
Installation type	Wall installation
Colour	White
Switching output	Light
Power consumption	~0.9 W
Light measurement	Mixed light measurement
Setting range brightness	10 – 1500 lx
Light switch-off delay	Pulse (0,5 s), 10 s-20 min
Type of contact light	Relay 230 V
Lamps	Incandescent/halogen lamps, fluorescent lamps, Energy saving lamps, LEDs
Resistive load	1400 W
Incandescent/halogen lamp load	1200 W

PresenceLight 180	
Compact and fluorescent lamps	960 VA (cos f = 0,8), 580 VA (cos f = 0,5)
Inrush current	max. 250 A / 200 µs
Energy saving lamps	10 x (1 x 58 W), 5 x (2 x 58 W), 16 x (1 x 36 W), 8 x (2 x 36 W), 16 x (smaller than 36 W)
LED lamp < 2 W	25 W
LED lamp 2-8 W	70 W
LED lamp > 8 W	80 W
Type of connection	Screw terminals
Max. cable cross section	2 x 2,5 mm <sup>2</sup>
Mounting plate	70 x 70 mm
Size of concealed housing	Ø 55 mm (NIS, PMI)
Detection range	100 m <sup>2</sup> (Ø 16 m   180°)
Detection angle	180°
Ambient temperature	-20°C ... 50°C
Type of protection	IP 54

Subject to technical changes and misprints

additional information at: [www.theben.de/product/2000050](http://www.theben.de/product/2000050)

The load data are determined with exemplary selected illuminants and are therefore typical data due to the large number of available products.

01/03/2023

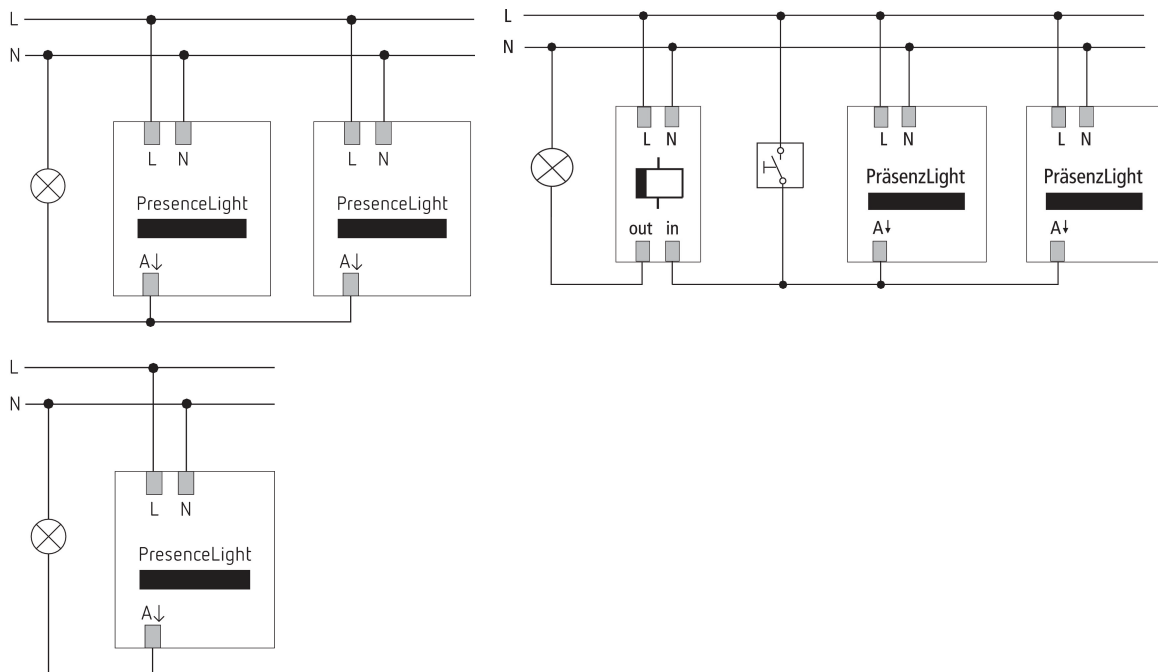
Page 1 of 3

# PresenceLight 180

Item no.: 2000050

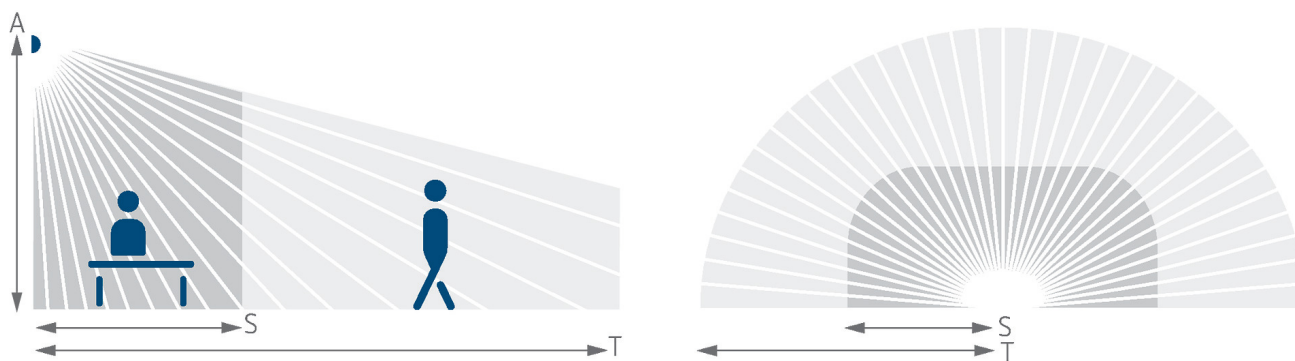


## Connection example



## Detection range for planning applications at a temperature of 21 °C

Mounting height (A)	Walking (T)	Sitting (S)	
2.2 m	100 m <sup>2</sup>   8 m	25 m <sup>2</sup>   7 m x 3.5 m	



Subject to technical changes and misprints

additional information at: [www.theben.de/product/2000050](http://www.theben.de/product/2000050)

The load data are determined with exemplary selected illuminants and are therefore typical data due to the large number of available products.

01/03/2023

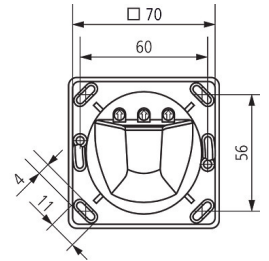
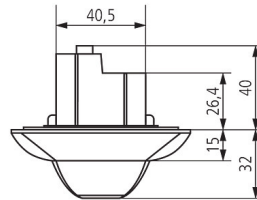
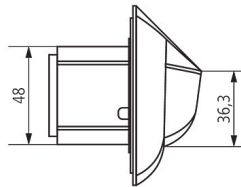
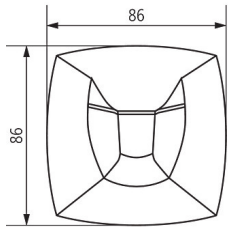
Page 2 of 3

# PresenceLight 180

Item no.: 2000050

**theben**

## Scale drawings



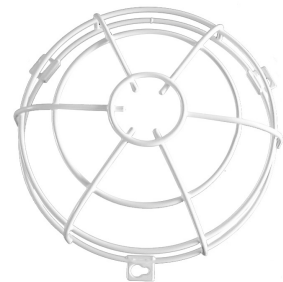
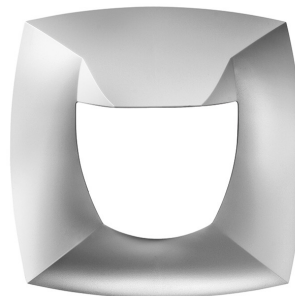
## Accessories

**clic**  
Item no.: 9070515

**Cover frame PresenceLight 180  
WH**  
Item no.: 9070629

**Cover frame PresenceLight 180  
SR**  
Item no.: 9070627

**QuickSafe**  
Item no.: 9070531



**Cover frame PresenceLight 180  
BK**  
Item no.: 9070628

**Surface frame PresenceLight**  
Item no.: 9070513



Subject to technical changes and misprints

additional information at: [www.theben.de/product/2000050](http://www.theben.de/product/2000050)

The load data are determined with exemplary selected illuminants and are therefore typical data due to the large number of available products.